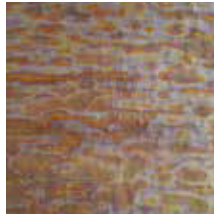


AUSARA

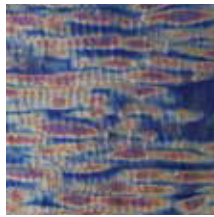
Technical Data Sheet

AURORA

Stainless steel / Brass on non-woven backing.

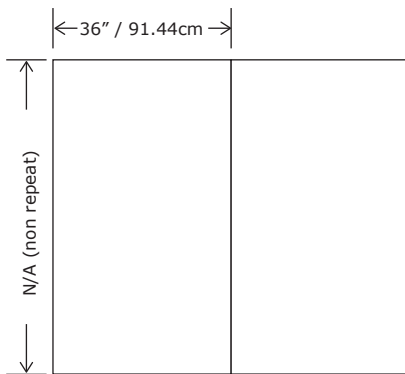


AUR005BR
Brass 50%
Polyester non-woven 50%

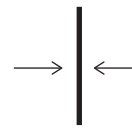


AUR005SS
Stainless 50%
Polyester non-woven 50%

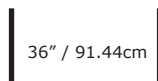
Note: : The portrayed colours may differ from reality.



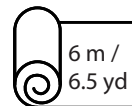
Apply the adhesive directly to the wall,
no need to humidify the back of
the wallcovering.



Straight match
No repeat design



Width of the
wallcovering.



Sold by the
metre/yard
with MOQ

References AUR005BR
Composition: Brass on non-woven backing.
Weight: $\pm 525 \text{ g/m}^2$ ($\pm 22.22 \text{ oz/sq yd}$)

References AUR005SS
Composition: Stainless steel on non-woven backing.
Weight: $\pm 275 \text{ g/m}^2$ ($\pm 11.64 \text{ oz/sq yd}$)

Please contact for more informations.