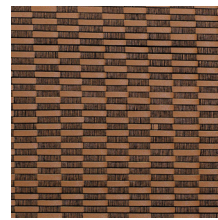


AUSARA

Technical Data Sheet

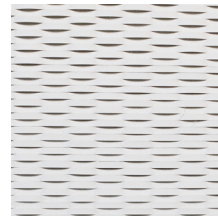
STUD & SKIN
Hand woven PU leather



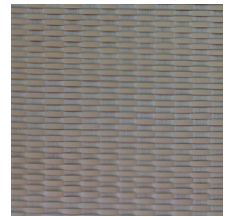
SAS211



SAS213



SAS224

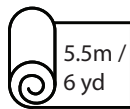


SAS236

Note: : The portrayed colours may differ from reality.

References SAS
Composition: Polyester 30% PU Leather 70%
Weight: $\pm 580 \text{ g/m}^2$ ($\pm 24.20 \text{ oz/sq yd}$)
Repeat: 3.8 cm // 1 1/2 in
Standard: N/A

59" / 150 cm
Width of the fabric



Sold by the metre/yard with MOQ

Please contact for more informations.

AUSARA SURFACE & TEXTILE 81 Moo 12 Bangplee Samutprakarn Thailand 10540
enquiries@ausarasurface.com www.ausarasurface.com