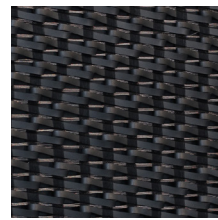


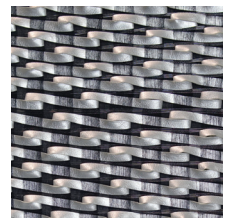
AUSARA

Technical Data Sheet

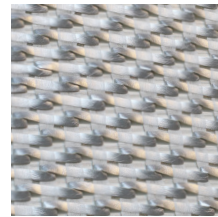
STUD & SKIN Hand woven PU leather



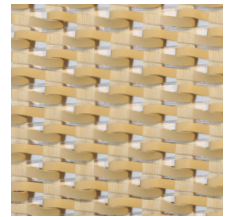
SAS313



SAS315



SAS325



SAS336

Note: : The portrayed colours may differ from reality.

References SAS
Composition: Polyester 25% PU Leather 70% Metal wire 5%
Weight: $\pm 1130 \text{ g/m}^2$ ($\pm 48.00 \text{ oz/sq yd}$)
Repeat: 3.8 cm // 1 1/2 in
Standard: N/A

59" / 150 cm
Width of the fabric

5.5m / 6 yd
Sold by the metre/yard with MOQ

Please contact for more informations.